



THE DYNASTINAE (COLEOPTERA: SCARABAEIDAE) OF PERU

RONALD D. CAVE
UNIVERSITY OF FLORIDA
FT. PIERCE, FL 34945-3138
RDCAVE@UFL.EDU

BRETT C. RATCLIFFE
UNIVERSITY OF NEBRASKA
LINCOLN, NE 68588-0514
BRATCLIFFE1@UNL.EDU

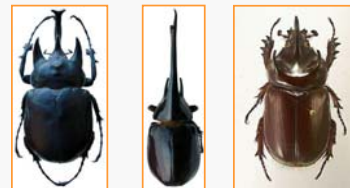


CYCLOCEPHALINI

- Acrobolbia* Ohaus, 1912
macrophylla Ohaus, 1912
- Ancognatha* Erichson, 1847
castanea Erichson, 1847
erythrodera (Blanchard, 1846)
humeralis Burmeister, 1847
lutea Erichson, 1847
scarabaeoides Erichson, 1847
vulgaris Arrow, 1911
- Aspidolea* Bates, 1888
brunnea Höhne, 1922
***collaris* Endrödi, 1966**
fuliginosa (Burmeister, 1847)
laticipes Harold, 1869
lindae Ratcliffe, 1978
***mimethes* (Höhne, 1922)**
notaticollis Höhne, 1922
singularis Bates, 1888
suturalis Höhne, 1922
- Augoderia* Burmeister, 1847
***freyi* Endrödi, 1967**
- Chalepides* Casey, 1915
dytiscoides (Arrow, 1911)
paradytis Ponchel and Dechambre, 2003
- Cyclocephala* Dejean, 1821
affinis Endrödi, 1966
almitana Dechambre, 1992
altamontana Dechambre, 1999
amazona (L., 1767)
bicolor Laporte, 1840
brevis Höhne, 1923
colasi Endrödi, 1964
confusa Endrödi, 1966
contracta Kirsch, 1873
cauturieri Dechambre, 1999
dilatata (Prell, 1934)
diluta Erichson, 1847
discolor (Herbst, 1792)
dispar (Herbst, 1792)
flavoscutellaris Höhne, 1923
flora Arrow, 1911
freyi Endrödi, 1964
fulgurata Burmeister, 1847
fulvipennis Burmeister, 1847
***genieri* Joly, 2010**
***goetzi* Endrödi, 1966**
guycolasi Dechambre, 1992
hirsuta Höhne, 1923
inca Endrödi, 1966
isabellina Höhne, 1923
kaszabi Endrödi, 1964
ligyria Bates, 1888
lineigera Höhne, 1923
liomorpha Arrow, 1911
lunulata Burmeister, 1847
macrophylla Erichson, 1847
mannheimi Endrödi, 1964
marginalis Kirsch, 1870
mecynotarsis Höhne, 1923
melanocephala (F., 1775)
molesta Endrödi, 1969
moreti Dechambre, 1992
morphoidina Prell, 1937
munda Kirsch, 1870
***obscura* Endrödi, 1966**
ocellata Bolívar y Pieltain, Jiménez-Asúa, and Martínez, 1963
octopunctata Burmeister, 1847
panthera Dechambre, 1979
paraflorea Martínez, 1978
paraguayensis *paraguayensis* Arrow, 1913
***peruana* Endrödi, 1966**

CYCLOCEPHALINI

- Cyclocephala* continued
***pilosa* Dupuis, 2006**
prolongata Arrow, 1902
pugnax Arrow, 1914
quadripunctata Höhne, 1923
rufovaria Arrow, 1911
rustica municipalis Höhne, 1923
scarabaeina (Gyllenhal, 1817)
sexpunctata Laporte, 1840
simulatrix Höhne, 1923
spilopyga Erichson, 1847
stictica Burmeister, 1847
testacea Burmeister, 1847
***tronchonii* Martínez, 1975**
tylifera Höhne, 1923
verticalis Burmeister, 1847
viridis Dechambre, 1982
***zurstrasseni* Endrödi, 1964**
- Dyscinetus* Harold, 1969
dubius (Olivier, 1789)
olivaceus Höhne, 1923
- Erioscelis* Burmeister, 1847
***peruana* Saylor, 1946**
proba (Sharp, 1877)
- Mimeoma* Casey, 1915
signatoides Höhne, 1923
- Stenocrates* Burmeister, 1847
bicarinatus Robinson, 1948
carbo Prell, 1938
celatus Prell, 1938
clipeatus Endrödi, 1966
cultor Burmeister, 1847
holomelanus (Germar, 1824)
minutus Endrödi, 1966
***nasutus* Dechambre, 1979**
poppei Endrödi, 1971



Megasoma actaeon *Dynastes neptunus* *Strategus jurgurtha*



Megasomas briansaltini



Enema pan



Phileurus didymus

PENTODONTINI

- Bothynus* Hope, 1837
entellus (Serville, 1825)
***lancifer* Dechambre, 1981**
- Diloboderus* Reiche, 1859
abderus (Sturm, 1826)
- Heteroglobus* Dupuis and Dechambre, 2008
***obesus* Dupuis and Dechambre, 2008**
- Hylbothynus* Ohaus, 1910
obesus Ohaus, 1910
- Oxyligyrus* Arrow, 1908
***contractus* Dupuis, 2010**
- Parapucaya* Prell, 1934
amazonica Prell, 1934
nodicollis (Kirsch, 1873)
- Pentodina* Endrödi, 1968
peruviana Endrödi, 1968
- Tomarus* Erichson, 1847
bituberculatus (Palisot de Beauvois, 1811)
burmeisteri (Steinheil, 1872)
ebenus (De Geer, 1774)
gyas Erichson, 1848
maimon Erichson, 1847
maternus (Prell, 1937)
peruvianus (Endrödi, 1970)
similis (Endrödi, 1968)
villosus (Burmeister, 1847)

ORYCTINI

- Coelosis* Hope, 1837
biloba (L., 1767)
- Enema* Hope, 1837
pan (F., 1775)
- Heterogomphus* Burmeister, 1847
***arowi* Prell, 1912**
dilaticollis Burmeister, 1847
***hirticollis* Prell, 1912**
hirtus Prell, 1912
***incornutus* Prell, 1912**
***mirabilis* Prell, 1912**
ochaoi Martínez, 1966
orsilochus Erichson, 1847
***peruvianus* Endrödi, 1976**
pilosus Dechambre, 1998
porioni Dechambre, 1998
rugicollis Prell, 1912
rubripennis Prell, 1912
ulysses Burmeister, 1847
- Megaceras* Hope, 1837
brevis Dechambre, 1999
***briansaltini* Ratcliffe, 2007**
endroedii Dechambre, 1998
infatum Prell, 1934
laevipenne Prell, 1914
morpheus Burmeister, 1847
philoctetes (Olivier, 1789)
porioni Dechambre, 1981
quadraticollis Dechambre, 1975
- Podischnus* Burmeister, 1847
oberthueri Sternberg, 1907
sexdentatus (Taschenberg, 1870)
- Strategus* Hope, 1837
aloeus (L., 1758)
jurgurtha Burmeister, 1847
surinamensis *hirtus* Sternberg, 1910

PHILEURINI

- Amblyproctus* Kolbe, 1910
chalumeaui Endrödi, 1977
iliger (Perty, 1830)
rugosus (Erichson, 1847)
- Archophileurus* Kolbe, 1910
aper Endrödi, 1977
burmeisteri (Arrow, 1908)
oedipus (Prell, 1912)
peruanus Endrödi, 1977
***sus* Dechambre, 2006**
- Hemiphileurus* Kolbe, 1910
brasiliensis Endrödi, 1978
deplanatus Endrödi, 1978
***elongatus* Dupuis and Dechambre, 2000**
***howdeni* Endrödi, 1978**
***isabellae* Dupuis, 2004**
***kahni* Dupuis and Dechambre, 2000**
- Homophileurus* Kolbe, 1910
quadrutuberculatus (P. de Beauvois, 1805)
- Microphileurus* Kolbe, 1910
caviceps Kolbe, 1910
***subulo* Prell, 1912**
- Oryctophileurus* Kolbe, 1910
arnicollis Prell, 1911
- Palaeophileurus* Kolbe, 1910
carbo Ratcliffe, 2002
erebus Ratcliffe, 2002
proximus Dechambre, 1997
- Phileucourtus* Dechambre, 2008
***bicornutus* Dechambre, 2008**
- Phileurus* Latreille, 1807
angustatus Kolbe, 1910
didymus (L., 1758)
excavatus Prell, 1911
kaszabi Endrödi, 1978
valgus *valgus* (Olivier, 1789)

AGAOCEPHALINI

- Aegopsis* Burmeister, 1847
chaminadei Dechambre, 2000
***peruvianus* Arrow, 1941**
- Brachysiderus* Waterhouse, 1881
quadriraculatus Waterhouse, 1881
- Mitracephala* Thomson, 1859
humboldti Thomson, 1859

DYNASTINI

- Dynastes* Kirby, 1825
hercules (L., 1758)
neptunus (Quensel, 1817)
- Golofa* Hope, 1837
aegeon (Drury, 1773)
clavigera (L., 1771)
eacus Burmeister, 1847
spatha Dechambre, 1989
***testudinarius* (Prell, 1934)**
unicolor (Bates, 1891)

- Megasoma* Kirby, 1825
actaeon (L., 1758)

The subfamily Dynastinae comprises 196 genera and about 1,500 species grouped among eight tribes. Six tribes, 87 genera, and at least 800 species occur in the New World, and most of these species occur in the Neotropics. Our recent work in Mesoamerica and the West Indies is making the Neotropical dynastine fauna better known, but much more inventory and taxonomic work is needed for the South American fauna.

Our checklist for Peru currently has 39 genera and 184 species. By comparison, Mexico, another large and megadiverse country, has 30 genera and 186 species. Thirty species (in red bold) are known only from Peru. We welcome your input if you have any taxa we can add to the list.

SUMMARY BY TRIBE

	GENERA	SPECIES
CYCLOCEPHALINI		
Peru:	10	96
Costa Rica/Panama:	7	82
Honduras/Nicaragua/El Salvador:	7	53
Mexico/Guatemala/Belize:	6	100
PENTODONTINI		
Peru:	8	18
Costa Rica/Panama:	6	17
Honduras/Nicaragua/El Salvador:	5	17
Mexico/Guatemala/Belize:	8	44
ORYCTINI		
Peru:	6	30
Costa Rica/Panama:	9	17
Honduras/Nicaragua/El Salvador:	8	17
Mexico/Guatemala/Belize:	8	31
PHILEURINI		
Peru:	9	30
Costa Rica/Panama:	9	29
Honduras/Nicaragua/El Salvador:	7	20
Mexico/Guatemala/Belize:	5	26
AGAOCEPHALINI		
Peru:	3	4
Costa Rica/Panama:	2	6
Honduras/Nicaragua/El Salvador:	1	3
Mexico/Guatemala/Belize:	1	2
DYNASTINI		
Peru:	3	9
Costa Rica/Panama:	3	9
Honduras/Nicaragua/El Salvador:	3	5
Mexico/Guatemala/Belize:	3	19