

**Key to genera of New World Aegialiini (Scarabaeidae: Aphodiinae)**

1. Head with surface not setose, variously sculptured, may have with setal fringe on clypeus (Fig. 1) ..... 2  
 1'. Head with surface distinctly setose (Fig. 2) .. *Argeremazus* Stebnicka and Dellacasa



Figure 1. *Aegialia argentina*.

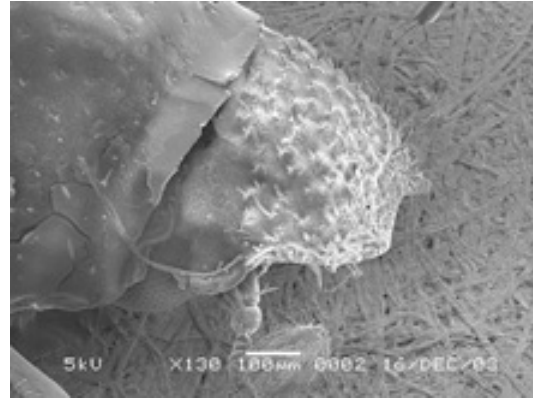


Figure 2. *Argeremazus neuquen*.

- 2(1). Elytral intervals with short hair. Abdominal sternites narrowed medially, fifth sternite obliterated at middle by sixth sternite (Fig. 3) ..... *Micraegialia* Brown  
 2'. Elytral intervals lacking short hair. Abdominal sternites not narrowed medially, fifth sternite not obliterated at middle by sixth sternite ..... 3

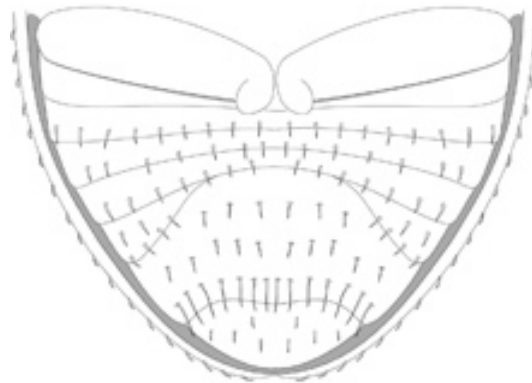


Figure 3. *Micraegialia pusillus*.

- 3(2). Elytral humerus dentate (Fig. 4). Body form parallel-sided ..... 4  
 3'. Elytral humerus not dentate (Fig. 5). Body form elongate to globose ..... 5

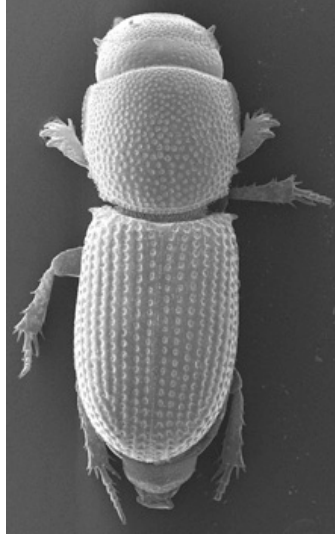


Figure 4. *Amerisaprus valdivia*.

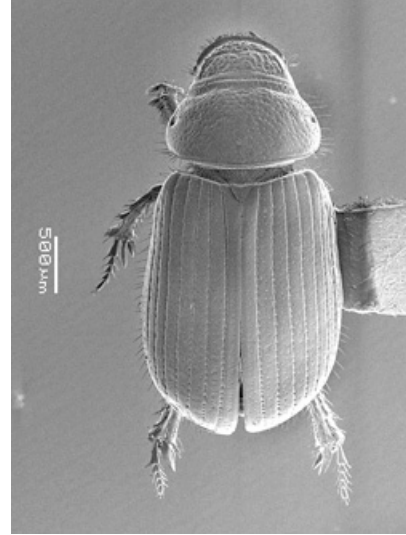


Figure 5. *Aegialia argentina*.

4(3). Pronotum with posterior angle eroded, bearing several small teeth (Fig. 6). Apical metatibial spurs not separated at base. Body black. Chile .....*Amerisaprus* Stebnicka and Skelley

4'. Pronotum with posterior angle not notably eroded, lacking distinct teeth. Apical metatibial spurs separated at base by metatarsus. Body reddish-brown Western North America and Japan ..... *Caelius* Lewis

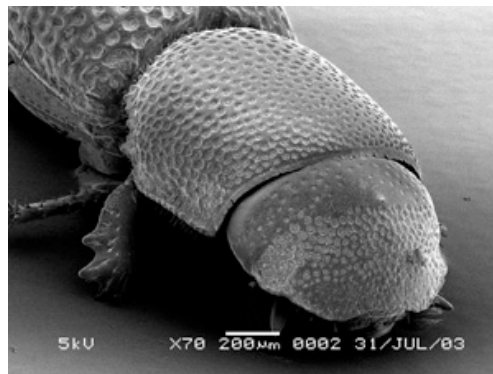


Figure 6. *Amerisaprus valdiviana*.

5(3). Maxillary palpus with terminal segment enlarged, widest at basal third, abruptly narrowed at base. Body red-brown. Body form notably elongate, almost parallel-sided. Basal marginal line of pronotum indistinct or lacking ..... *Rhysothorax* Bedel

5'. Maxillary palpus with terminal segment cylindrical. Body usually black, reddish-brown in some flightless members. Body form elongate to globose, but not parallel-sided. Basal marginal line of pronotum usually distinct, at least laterally ..... *Aegialia* Latreille