

**Key to genera of Anaidinae (Scarabaeoidea: Hybosoridae)**  
(after Ocampo 2006)

- 1. Elytral disc nearly flat, sides separated from disc by strong carina ..... 2
- 1'. Elytral disc convex, carina (e) present or not ..... 5
- 2 (1). Head with frontoclypeal juncture not forming a sharp angle (Fig. 8a) ..... 3
- 2'. Head with frontoclypeal juncture forming a sharp angle (Fig. 8b) .. **Cryptogenius** Westwood

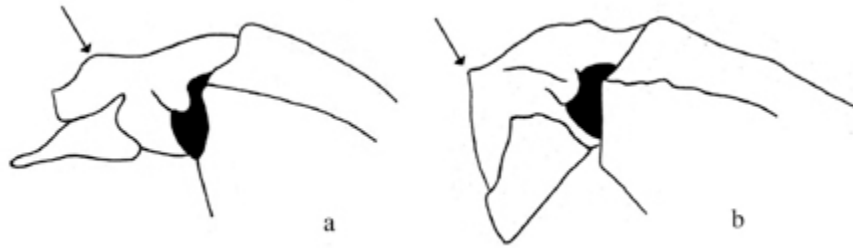


Figure 8. Lateral view of frons and clypeus of Anaidinae, a) frontoclypeal juncture not forming a sharp angle, b) frontoclypeal juncture forming a sharp angle.

- 3(2). Elytra tuberculate. Metathoracic wings not developed or vestigial ..... **Callosides** Howden
- 3'. Elytra not tuberculate. Metathoracic wings well-developed ..... 4
- 4(3). Pronotum with 4 well-developed longitudinal carinae (Fig. 6) ..... **Totoia** Ocampo
- 4'. Pronotum with or without 2 longitudinal carinae (Fig. 10) ..... **Anaides** Westwood



Figure 6. *Totoia magnifica*.



Figure 10. *Anaides fossulatus*.

5(1). Pronotum with posterior, medial depression. Metasternum short at middle (Fig. 9a)  
..... **Hybochaetodus** Arrow

5'. Pronotum without posterior, medial depression (small fovea may be present). Metasternum  
long at middle (Fig. 9b) ..... **Chaetodus** Westwood

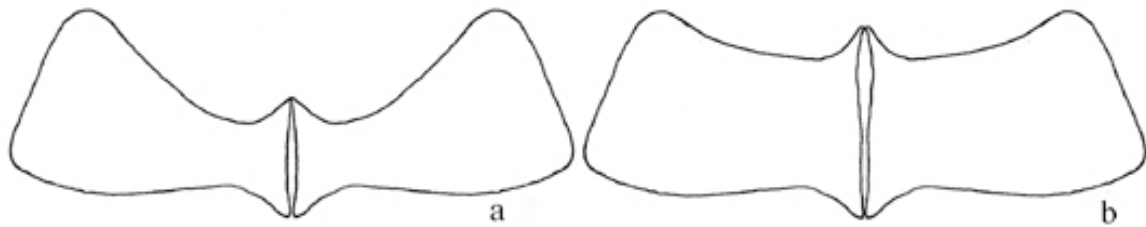


Figure 9. Metasternum of a) Hybochaetodus species and b) Chaetodus species.