

**Key to genera of New World Odontolochini (Scarabaeidae: Aphodiinae)**

1. Anterior clypeal margin with medial series of small teeth, appearing serrate (Fig. 1) ..... *Saprositellus* Balthasar  
 1'. Anterior clypeal margin entire, lacking teeth (Fig. 2) ..... 2

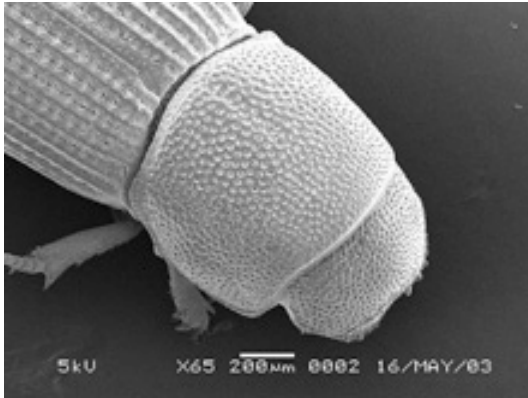


Figure 1. *Saprositellus ariquemmes*.

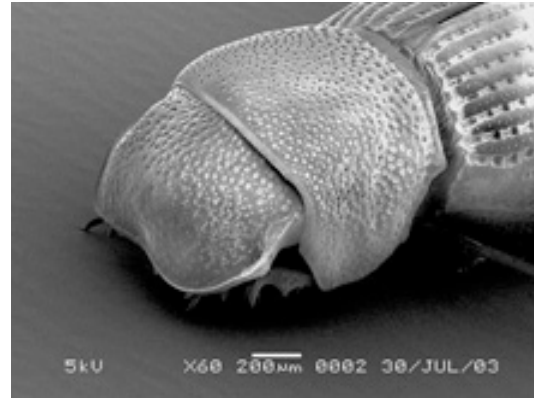


Figure 2. *Saprolonchus tambopatae*.

- 2(1). Pronotum with coarse punctures restricted to broad transverse depression along basal third, anterior 2/3 swollen and finely punctate (Fig. 3) ..... *Stebnickiella* Skelley  
 2'. Pronotum with punctures evenly distributed, base lacking broad transverse depression ..... 3

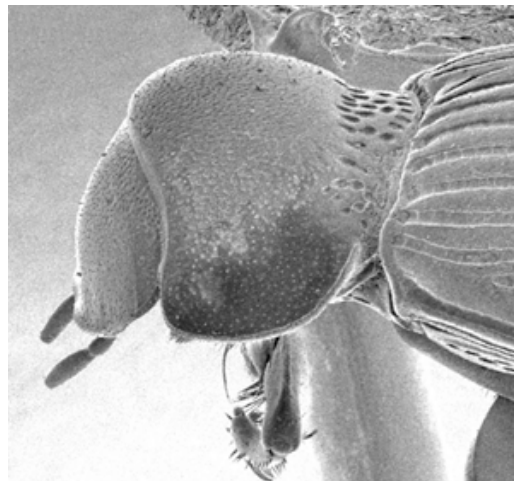


Figure 3. *Stebnickiella zosterixys*.

3(2). Body elongate, surface argillaceous; head with punctures evenly distributed, obscured by argillaceous coating (Fig. 4); pronotum with 2 medial longitudinal ridges; alternate elytral intervals weakly carinate ..... *Amerilochus* Skelley  
 3'. Body stout, surface not argillaceous, can be somewhat dulled (alutaceous) or glossy; head with band of large punctures at base, extremely fine punctures anteriorly (Fig. 2); pronotum evenly convex, lacking longitudinal ridges; elytral intervals similarly developed ..... *Saprolochus* Stebnicka and Galante

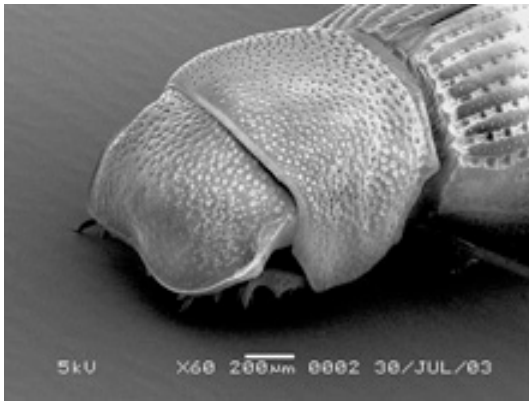


Figure 2. *Saprolochus tambopatae*.



Figure 4. *Amerilochus cinereus*.